

BITE SPLINTS

~ CLEAR COMFORT BITE SPLINT

- Hard night guard fabricated from modified composite material.
- Moldable after placing in warm water.
- Does not contain methyl methacrylate.
- Chairside repairs can easily be made with cold-cure acrylics.

KDA COMFORT H/S™ ~ BITE SPLINT

- Made of two layers: a 1mm soft polyurethane inner layer and a 3mm hard copolyester outer layer.
- Comes Standard with a flat occlusal plane and slight opposing cusp indentation or choose your specific bite plan needs.
- Fabricated from ISO-certified ERKODENT® copolyester and polyurethane discs.
- BPA-free and non-allergenic.



HARD ACRYLIC BITE SPLINT ~

- For patients who grind and may be showing early signs of wear.
- Vacuum formed Erkoform material.
- Lightweight and clear.

OTHER OFFERINGS: Hawley Retainers, Spring Retainers, Lower Lingual Arch, Band & Loop, Essix Retainer, Sports Guard, Bleaching Tray Set

KEY DENTAL
AESTHETICS

5968 S NC 16 Hwy | Maiden | NC | 28650
keydentalnc.com | 704.489.9978

Bite Splint Care: Brush with a clean, non-abrasive gel toothpaste.

©2026 KEY DENTAL AESTHETICS



CLASSIC

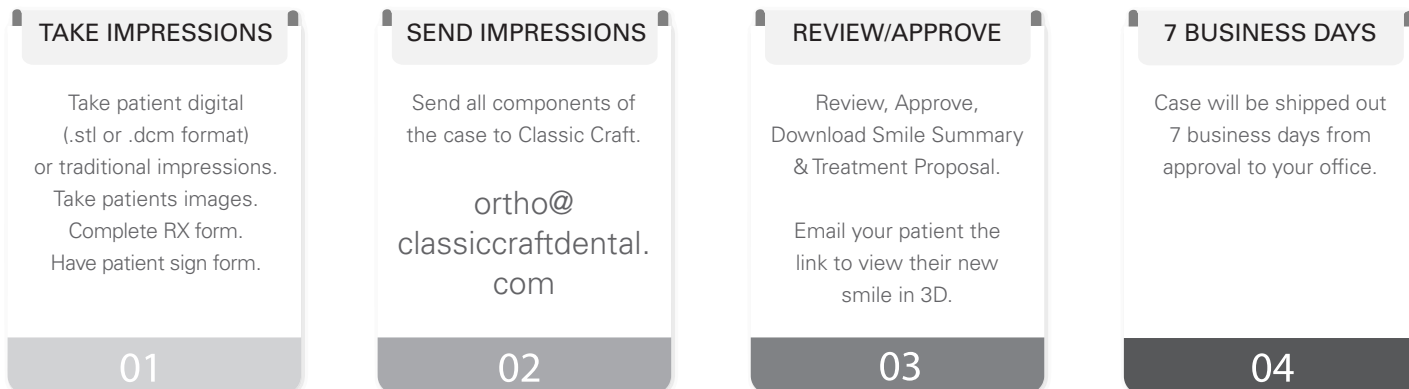
SMILE ALIGNERS

WHY OUR CLEAR ALIGNERS?

- Made from a premium thermoformed plastic material that is engineered for precision fit, ongoing force retention for faster treatment, exceptional durability, and greater comfort for your patient.
- Tear and stain resistant.
- Manufactured in the USA using FDA 510(k) cleared, MDSAP certified processes.
- Each clear aligner is marked with a unique identifier code for the case and the stage.

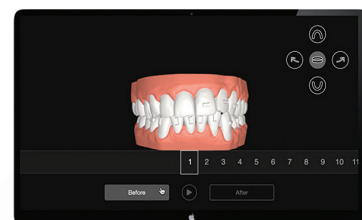
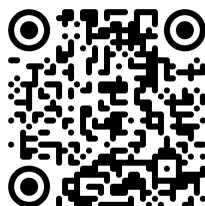


STREAMLINED FOR EASY CASE MANAGEMENT AND ORDER



DOWNLOAD OUR FORMS

SCAN HERE, VISIT OUR WEBSITE, OR CALL THE LAB



KEY DENTAL

AESTHETICS

5968 S NC 16 Hwy | Maiden | NC | 28650
keydentalinc.com | 704.489.9978

