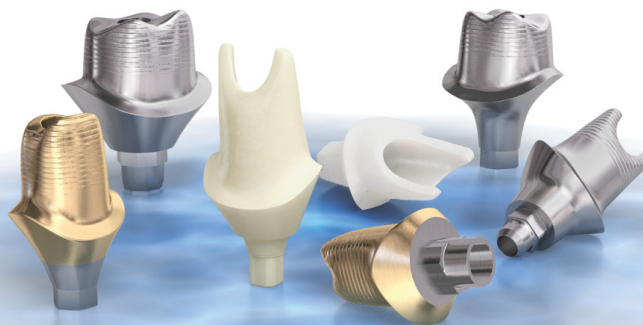


ABUTMENTS

Key Dental Aesthetics works with all FDA-approved implant manufacturers including, but not limited to, Atlantis, Zimmer Biomet, Straumann, Nobel Biocare, and Vulcan. We are also an Encode Empowered lab, which allows us to unlock Encode healing caps for abutment milling without using a third party.

- ❖ Custom abutment partners assume all warranties for OEM implants
- ❖ Options include: titanium, gold hue titanium, zirconia, hybrid zirconia, and one piece: screw-retained on a ti-base



Atlantis®
Provided by Dentsply Sirona Implants

Atlantis® Nobel
Provided by Dentsply Sirona Implants Biocare™

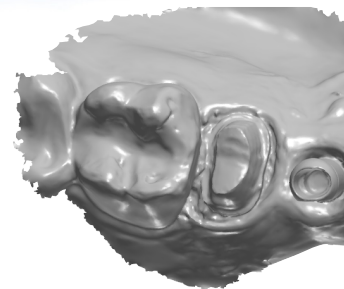


Left image courtesy of Dentsply Sirona, Inc.
Right image courtesy of Nobel Biocare



FREE SCAN BODIES

Key Dental Aesthetics has partnered with Atlantis and Nobel Biocare to provide free scan bodies for a wide selection of implant manufacturers. Scan bodies can be used on all digital platforms. Scan bodies create a seamless transfer of unique implant placement information to us for an unmatched custom abutment and aesthetic crown result.



DENTAL IMPLANT SURGICAL GUIDES

Surgical guides are easily adaptable to various clinical situations. The most common use of surgical guides is for single or multiple implants for fixed restorations. The teeth provide support, stability, and retention improving accuracy and precision when placing the implant.

- ❖ Improved accuracy and precision of implants
- ❖ Faster, simpler surgery
- ❖ Predictable restorative outcomes
- ❖ Guides the surgical instruments and implants to the proper location



CUSTOM-MILLED BARS

Key Dental Aesthetics offers milled titanium or custom-cast bars for over dentures. We have partnered with Atlantis to offer a unique variety of options for cases that are more complex in nature. Custom bars can be paired with a semi-fixed or fixed prosthesis as dictated by your treatment plan. Custom-milled locator and Hader bars are also available. Call the lab for more information.



Atlantis®
Provided by Dentsply Sirona Implants

KEY DENTAL

AESTHETICS

5968 S NC 16 Hwy | Maiden | NC | 28650
keydentalnc.com | 704.489.9978

OUR GO-TO SOLUTION FOR
FULL-ARCH RESTORATIONS

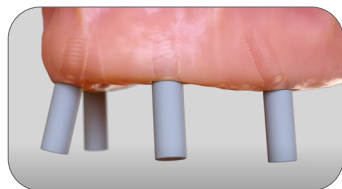
Atlantis® BridgeBase

Atlantis® BridgeBase patient-specific, screw-retained solutions are ideal for multiple-unit cases, delivering strength, aesthetics, and a streamlined workflow. Boost your case volume with total confidence.



FLEXIBILITY AND WORKFLOW EFFICIENCY IN MULTI-UNIT RESTORATIONS

Atlantis® BridgeBase provides a splinted framework for partial and full-arch cases, allowing a highly efficient digital workflow due to the included Atlantis Core file.



If you have any questions or would like to submit a case, call the lab at 704.489.9978.



All images courtesy of Dentsply Sirona, Inc.

PATIENT-SPECIFIC DESIGNS

Unlock the potential for strong, customized restorations with patient-specific Core Design and individualized margin design.

ENVIABLE AESTHETICS

Angulated screw access up to 30° and an optimized emergence profile whenever the case requires it.

STREAMLINED WORKFLOWS

Open digital scanning and Atlantis Core file allow the lab to work their way.

TOTAL COVERAGE

We have you covered with products that are 510(k) accepted, include a comprehensive warranty, and have a history of 5M+ cases that confirm quality and performance.

KEY DENTAL
AESTHETICS

5968 S NC 16 Hwy | Maiden | NC | 28650
keydentalinc.com | 704.489.9978

©2026 KEY DENTAL AESTHETICS